



**≡ Intenta S2000 | Intenta S2100 security**  
Intelligent 3D-Vision Sensors

# ☰ Intenta S2000/S2100 security



The **Intenta S2000** represents a new generation of intelligent cameras. It is characterized by **three-dimensional** scene detection, which enables reliable, automatic person recognition.

Thanks to integrated image processing for the analysis of the data, no additional computing equipment is necessary. As a result, the transfer/broadcast of video data can be omitted completely.

This offers a **variety** of potential applications. Access control, room surveillance, and the recognition and reporting of potentially dangerous situations are possible with the **Intenta S2000**, as well as the collection of statistical data (people counting, dwell-time measurement, etc.).

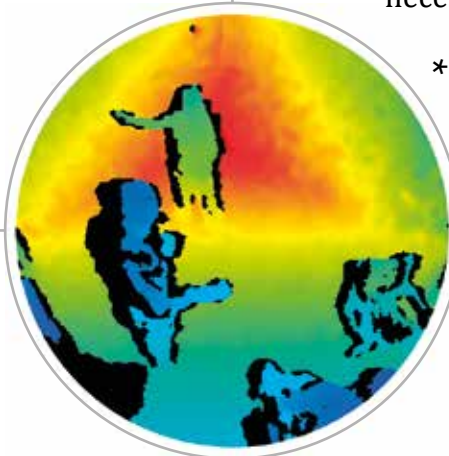
The **Intenta S2100 security** offers an optional tamper-proof security version for public areas and other applications with high security demands.

## 3D-Vision

- ✓ Universal optical object recognition
- ✓ Reliable recognition even under changing light conditions
- ✓ Distinction between people and objects
- ✓ HD video stream

## Integrated Data Processing

- ✓ Real-time analysis
- ✓ Operation possible without transmission of the image data e.g. in data-sensitive fields
- ✓ No additional computer technology necessary



## Intuitive Management

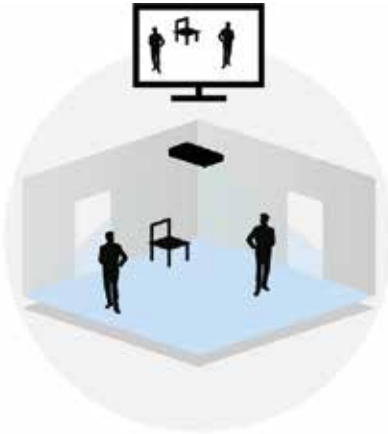
- ✓ Simple installation
- ✓ Fully automatic calibration
- ✓ Configuration via web interface
- ✓ Remote diagnosis and maintenance
- ✓ Self diagnosis (incl. dirt and occlusion detection)

## Varied possible Applications

- ✓ Universal interfaces
- ✓ Simple integration into existing systems
- ✓ Functional design
- ✓ Power over ethernet

\* Depth map of a room with two people and a chair

# ≡ Intelligent Surveillance



When deployed for room surveillance, the **Intenta S2000** is able to detect several events **autonomously**; after their appearance a notification is sent.

- ✓ Detection and measurement of people and objects
- ✓ Distinction among size, position, and posture of people
- ✓ Broadcast of the videos is possible

## Fields of Application

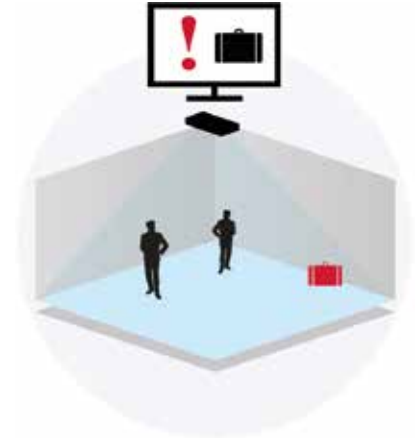
- ✓ Automatic system control
- ✓ Collection of statistical data
- ✓ Property and personal security





The **Intenta S2000** detects objects and reports forgotten/left-behind items **immediately**.

- ✓ Recognition of lost baggage
- ✓ Simultaneous detection and distinction of several objects

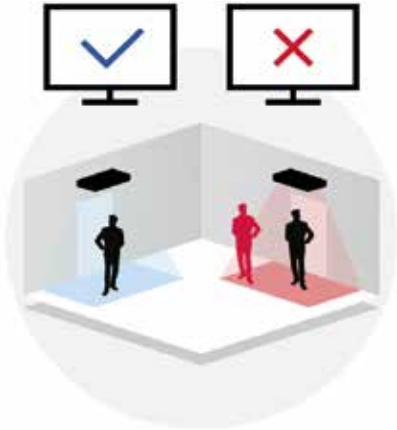


## Fields of Application

- ✓ Airports, train stations, banks
- ✓ Public buildings
- ✓ Shopping centers



# ≡ Access Control



As a **reliable** component of an access control system the **Intenta S2000** detects people in entrance areas.

- ✓ Definition of control parameters
- ✓ Denying access when these parameters are not met
- ✓ Safe against manipulation through the recognition of unusual body positions

## Fields of Application

- ✓ Rooms with restricted access
- ✓ Sensitive enterprise areas
- ✓ Critical public areas



# Emergency Recognition



When emergency situations are detected safely by the **Intenta S2000**, warning signals are triggered automatically.

- ✓ Fall detection
- ✓ Recognition of inactivity
- ✓ Location and posture recognition of people



## Fields of Application

- ✓ Personal security in various hazard areas
- ✓ Health care institutions
- ✓ Ambient Assisted Living (AAL)



# ≡ Dwell-Time Measurement



A **precise** measurement of the duration of stay of persons in preassigned areas is possible with the **Intenta S2000**.

- ✓ Definition of coverage areas
- ✓ Distinction between people and objects
- ✓ Time logging
- ✓ Queue management

## Fields of Application

- ✓ Shopping centers, supermarkets
- ✓ Galleries, museums
- ✓ Fairs





The **Intenta S2000** performs people counting with **high precision**.

- ✓ Results from numerous sensors can be combined
- ✓ Reliable people counting possible, even with high density
- ✓ Distinction of people by size (adults vs. children)



## Fields of Application

- ✓ Public short and long-range transportation
- ✓ Institutions, other facilities
- ✓ Retail locations



# Technical Data



## Intenta S2000

<b>Power Supply</b>	Power over Ethernet (IEEE 802.3af)
<b>Power Consumption</b>	max. 5W
<b>EMC</b>	EN55022
<b>Ethernet</b>	1000MBit, RJ45
<b>In-/Outputs</b>	4 digitale IOs
<b>USB-Port</b>	USB 2.0, Type Host
<b>Serial Port</b>	2-Draht RS485
<b>Mounting Height</b>	2,50 – 7m
<b>Housing Material</b>	Aluminium
<b>IP class</b>	IP 20, optional IP 65
<b>Dimensions (L x B x H)</b>	200 x 70 x 33mm
<b>Weight</b>	500g
<b>WiFi (optional)</b>	802.11b/g
<b>Logical Protocols</b>	Message API, CSV, RTP, RTSP, FTP, HTTP, HTTPS, SMTP...



## Intenta S2100 security

<b>Power Supply</b>	Power over Ethernet (IEEE 802.3af)
<b>Power Consumption</b>	max. 5W
<b>EMC</b>	EN55022
<b>Ethernet</b>	1000MBit, RJ45
<b>In-/Outputs</b>	-
<b>USB-Port</b>	-
<b>Serial Port</b>	-
<b>Mounting Height</b>	2,50 – 7m
<b>Housing Material</b>	Plastic, Stainless steel
<b>IP class</b>	IP 40
<b>Dimensions (L x B x H)</b>	292 x 112 x 90mm
<b>Weight</b>	1000g
<b>WiFi (optional)</b>	-
<b>Logical Protocols</b>	Message API, CSV, RTP, RTSP, FTP, HTTP, HTTPS, SMTP...

**Intenta GmbH** is an innovative IT-Company based in Chemnitz, Germany. The engineers have expert knowledge and many years of experience developing software and algorithms for scene analysis for automatic surveillance and recognition tasks.

Intenta GmbH is a sought-after economic partner in the development of software and algorithms for driving assistance systems and navigation components.

**Intenta GmbH** – your specialist for:

- ✓ Image processing
- ✓ Person and object recognition
- ✓ Data fusion

**Customer satisfaction** is our top priority. As our customer, your wishes are at the center of our thoughts and actions. We provide comprehensive advice and support and the highest possible flexibility and reliable service are our primary goals.

Intenta GmbH is certified through DIN EN ISO 9001.



# INTENTA

ADVANCED RECOGNITION COMPONENTS

Intenta GmbH  
Ahornstraße 55  
09112 Chemnitz  
Germany  
Phone: +49 (0) 371 24354 0  
Email: [info@intenta.de](mailto:info@intenta.de)  
[www.intenta.de](http://www.intenta.de)

© Intenta GmbH