

# Intenta S2000

Intelligent 3D-Vision Sensor



People Counting



Dwell-Time Measurement



Access Control



Intelligent Surveillance



Behaviour Analysis

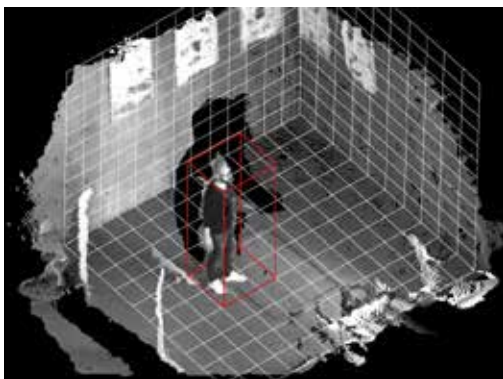


Object Recognition

## One Sensor. Many Possibilities.

### **3D** 3D-Vision Technology

- Individual person detection, even if partially concealed
- Reliable detection in the event of fluctuating light conditions
- Classification of behavioural patterns
- Accurate measurement and localisation of people and objects



### **Embedded Systems**

- Integrated image processing
- Automatic detection of objects and people in real time
- No additional computer technology required

### **Web Interface**

- Simple access via browser
- Intuitive operation
- Visualisation of the processing
- Uncomplicated firmware updates



### **Installation and Configuration**

- Robust housing
- Simple integration into existing systems
- Fully automatic calibration
- Universal interfaces
- Ceiling installation in the case of people counting
- Installation independent of the angle of inclination for surveillance tasks



### **Data Security**

- Optional storage and transfer of image data
- Internal data storage
- Encrypted data export possible

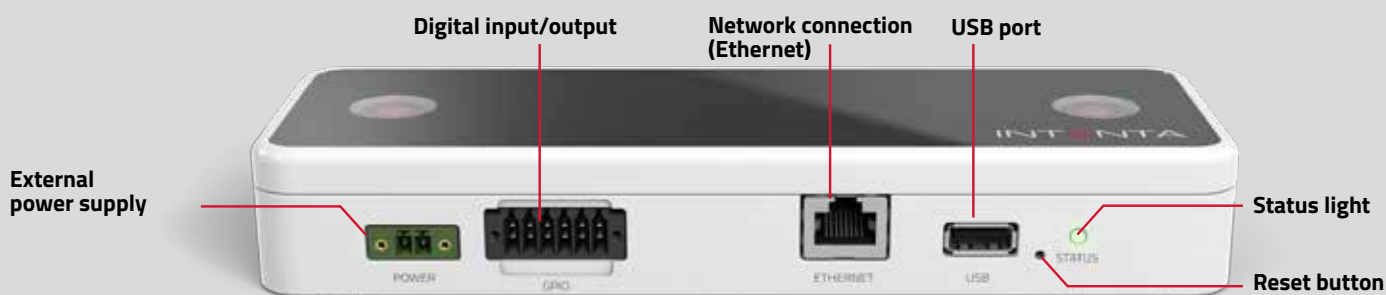
## Technical Data

<b>Power supply (via PoE)</b>	PoE Class 0 (IEEE 802.3af)
<b>External power supply (optional)</b>	12-24VDC
<b>Power consumption</b>	max. 5W
<b>EMC</b>	EN55022
<b>Operating temperature</b>	0°C to 50°C
<b>Storage temperature</b>	-20°C to 70°C
<b>Air humidity</b>	10-90% relative humidity (non-condensing)
<b>Required illumination</b>	min. 5 Lux
<b>Data storage</b>	up to 32 GB
<b>IP protection class</b>	IP20, optional IP65*

## Interfaces

<b>Ethernet</b>	1000MBit, RJ45
<b>USB port (max. 500 mA)</b>	USB 2.0, type host
<b>Switching input/output</b>	4 digital I/Os
<b>Serial port</b>	2-wire RS485
<b>WiFi (optional*)</b>	802.11b/g
<b>Web browser</b>	Chrome, from version 40 Firefox, from version 31 Internet Explorer, from version 11
<b>Firmware update</b>	via web interface

\* only on request



## Configuration Possibilities

<b>Detection zones</b>	10 per sensor
<b>Counting lines</b>	10 per sensor

## Standards and Protocols

<b>Streaming standards</b>	HD (720p), Colour Image, MJPEG
<b>Logical protocols</b>	Message API, DHCP, RTP, RTSP, FTP, HTTP, HTTPS, NTP

## Housing

<b>Housing material</b>	Aluminium
<b>Protective lens cover</b>	Polycarbonate cover
<b>Dimensions (L x W x H)</b>	200 x 70 x 33mm
<b>Weight</b>	approx. 500g
<b>Mounting</b>	Threaded hole 1/4" - 20 BSW
<b>Colour</b>	white (RAL 9010), black (RAL 9005)

